

Introduction To The Grizzly #3 Cross Cut Sled

Overview



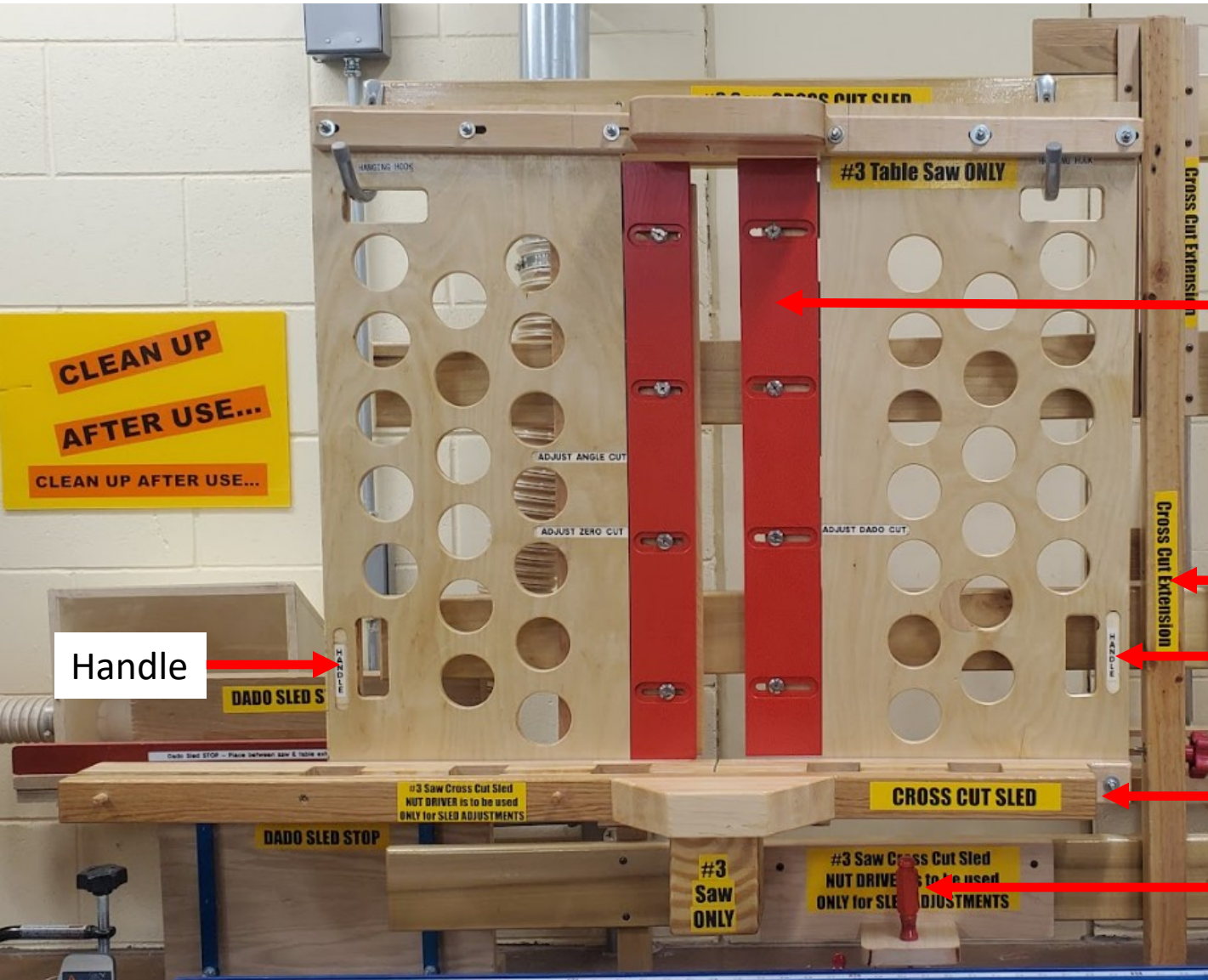
- Zero clearance
- Bevel cuts
- Dado Cuts
- Extension Fence



NO HANDS

Do not use the blade guard to move the sled during cuts

Storage



Handle

Adjustable Plates

Extension Rail

Handle

Cross Cut Sled

Nut Driver

Install And Square The Blade

- **Turn the power off at the disconnect**
- Insert the appropriate blade
 - Normally the 10" cross cut blade with riving knife
 - 10" Thin Kerf Blade with riving knife (tool crib check out)
 - 8" dado blades (tool crib check out) (refer to the next page for details)
- Square the blade to the table
- Install the corresponding blade insert (zero clearance, bevel, or dado)
 - Inserts are located in the table saw's drawers
- **Lower the blade to eliminate interference when mounting the sled**



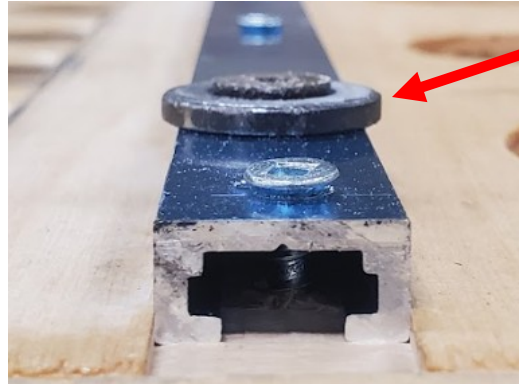
Installing Dado Blades

- **Turn the power off at the disconnect**
- Square the blade using the 10" blade already in the saw
 - Instructions on previous page
- Install and stack the dado blades to the required width
- Install the dado blade insert
 - Inserts are located in the table saw's drawers
- Verify the width of the dado cut using scrap wood and a miter gauge before mounting the sled on the table saw
 - Adjust the width of cut using shims or changing the chipping blades
 - **CAUTION: Watch your fingers when making test cuts**
- **Lower the blade to eliminate interference when mounting the sled**



Mount The Cross Cut Sled

- Insert the two tracks into the grooves on the saw table
 - The sled mounts using two tracks with protruding washers
 - **The washers must be inserted into the groove to properly support the sled**



Washer on the bottom of the tracks
(Underside of sled shown)



Mount the sled with the cross cut extension rail OFF

Sled Adjustments

- The two red inserts have three adjustment options
 - Adjust zero cut (left insert)
 - Adjust angle cut (left insert)
 - Adjust dado cut (right insert)
- Use the nut driver stored under the sled to adjust the four nuts on the left or right insert as required (refer to the following pages for details)



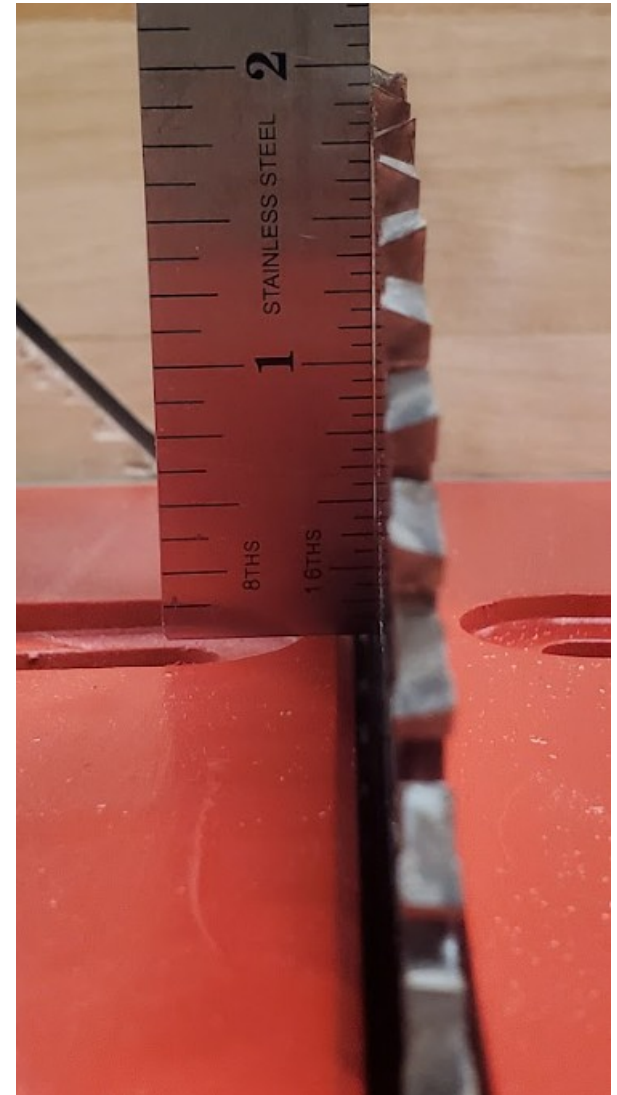
Zero Clearance Setup

- This is the normal configuration for the sled
 - It should have been in this configuration when stored
- **Verify the power is off at the disconnect**
- **Slowly raise the blade to ensure it does not contact the red inserts**
- Slide the sled so that the blade is near the back of the sled
 - Manually spin the blade to verify the blade will not contact the red inserts
- Slide the sled so that the blade is near the front of the sled
 - Manually spin the blade to verify the blade will not contact the red inserts
- Slide the sled from the front to the back to make sure the blade does not contact the red inserts during travel
- If adjustments are required, use the nut driver to loosen the bolts and reposition the red inserts
 - Four bolts on the left insert
 - Four bolts on the right insert



Zero Clearance Setup (Continued)

- Set the blade height
- The maximum depth of cut is approximately 2"
- Attach the cross cut extension rail only if needed
 - Refer to subsequent instruction pages



Bevel Cut Setup

- **Verify the power is off at the disconnect**
- **Before raising the blade**
 - Loosen the four nuts on the left insert
 - Slide the left insert all the way to the left
 - Snug the four nuts to secure the left insert
 - DO NOT OVER TIGHTEN
- Position the blade near the middle of the sled
- **Slowly raise the blade to ensure it does not contact the red inserts**
 - Manually spin the blade to verify the blade will not contact the red inserts
- **Slowly adjust the blade's angle to ensure it does not contact the red inserts**
- Slide the sled from the front to the back to make sure the blade does not contact the red inserts during travel
- If adjustments are required, use the nut driver to loosen the bolts and reposition the red inserts
 - Four bolts on the left insert
 - Four bolts on the right insert



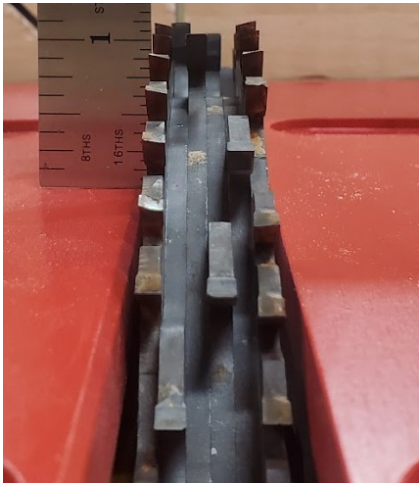
Dado Blade Setup

- Before raising the blade
 - Loosen the four nuts on the right side red insert
 - Position the right side red insert all the way to the right
- Position the blade near the middle of the sled
- **Slowly raise the blade to ensure it does not contact the red inserts**
- Position the right side red insert so that it is just to the right of the rightmost edge of the dado blade
- Position the left side red insert so that it is just to the left of the leftmost edge of the dado blade
 - Manually spin the blade to verify the blade will not contact the red inserts
- Slide the sled from the front to the back to make sure the blade does not contact the red inserts during travel
- If adjustments are required, use the nut driver to loosen the bolts and reposition the red inserts
 - Four bolts on the left insert
 - Four bolts on the right insert



Dado Blade Setup (Continued)

- Set the blade height
 - Maximum depth of cut is approximately 1"
- Clamp a sacrificial board to the cross cut sled's fence
 - Using a sacrificial board will reduce tear out on your workpiece



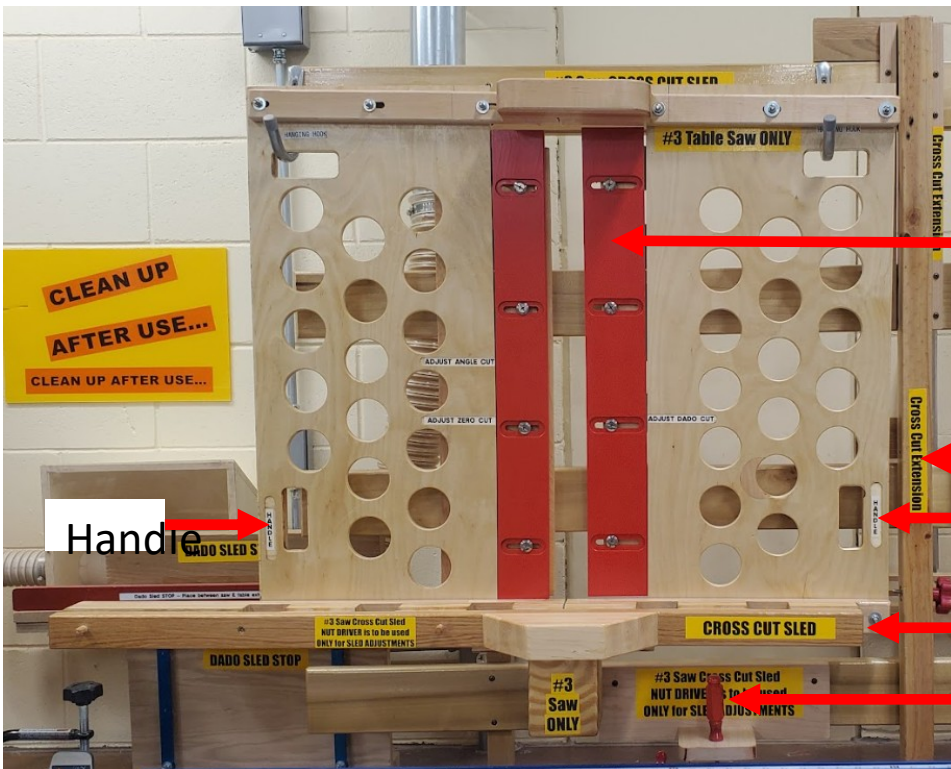
The Cross Cut Sled Extension

- **Make all adjustments prior to attaching the extension**
 - Position the red inserts
 - Set the blade height
- Align the extension over the sled
 - Two dowels over the holes
 - Red knob over the threaded insert
- Carefully slide the extension into place
- Snug the red knob to secure the cross cut extension to the sled
 - DO NOT OVER TIGHTEN
- The cross cut sled extension includes two stop blocks with differing lengths (select the stop block best suited to your individual cuts)
- **When finished, remove the extension before removing the sled**



Storing The Sled

- Remove the extension before removing the sled (if used)
 - The cross cut extension is stored vertically on the rail
- Firmly grip the handles and slide the sled off the table saw
- Hand the sled on the two hooks with the blade guard at the bottom
- Replace the nut driver in its storage slot



Adjustable
Plates

Extension Rail
Handle

Cross Cut Sled
Nut Driver